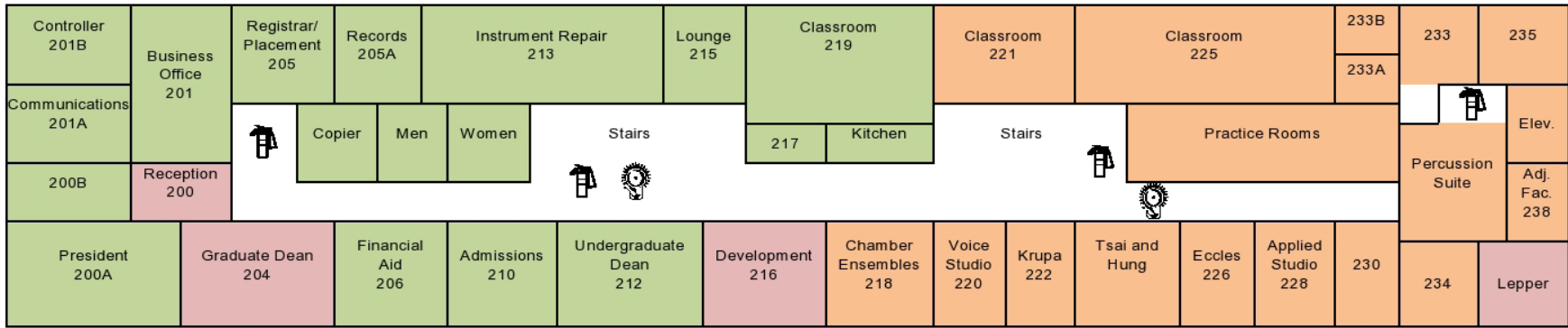
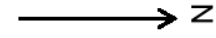
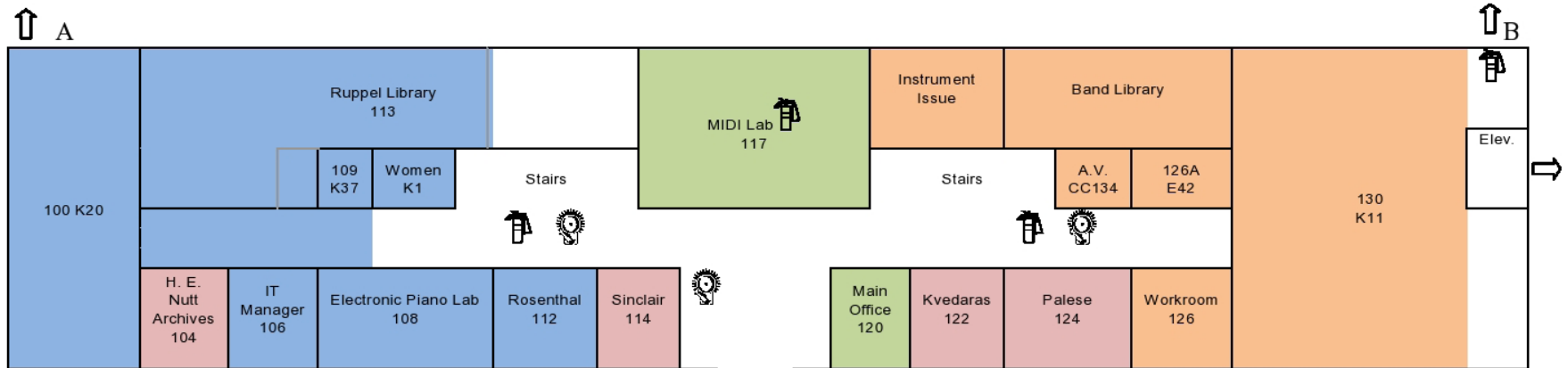


VanderCook College of Music Building Map



Second floor



First floor

Front Entrance



09/30

- Fire extinguisher
- Alarm
- Emergency Exit

Evacuation Plan:

Areas in **blue** will exit the building using fire exit A located in room 100.

Areas in **orange** will exit the building using fire exit B located in room 130.

Areas in **green** will exit the building using the front door.

Floor Monitors are designated on each floor to their assigned section of the building. In addition, an elevator monitor is stationed by the elevator to direct people to staircases and an assigned building monitor is monitoring the situation and reporting to IIT Public Safety.

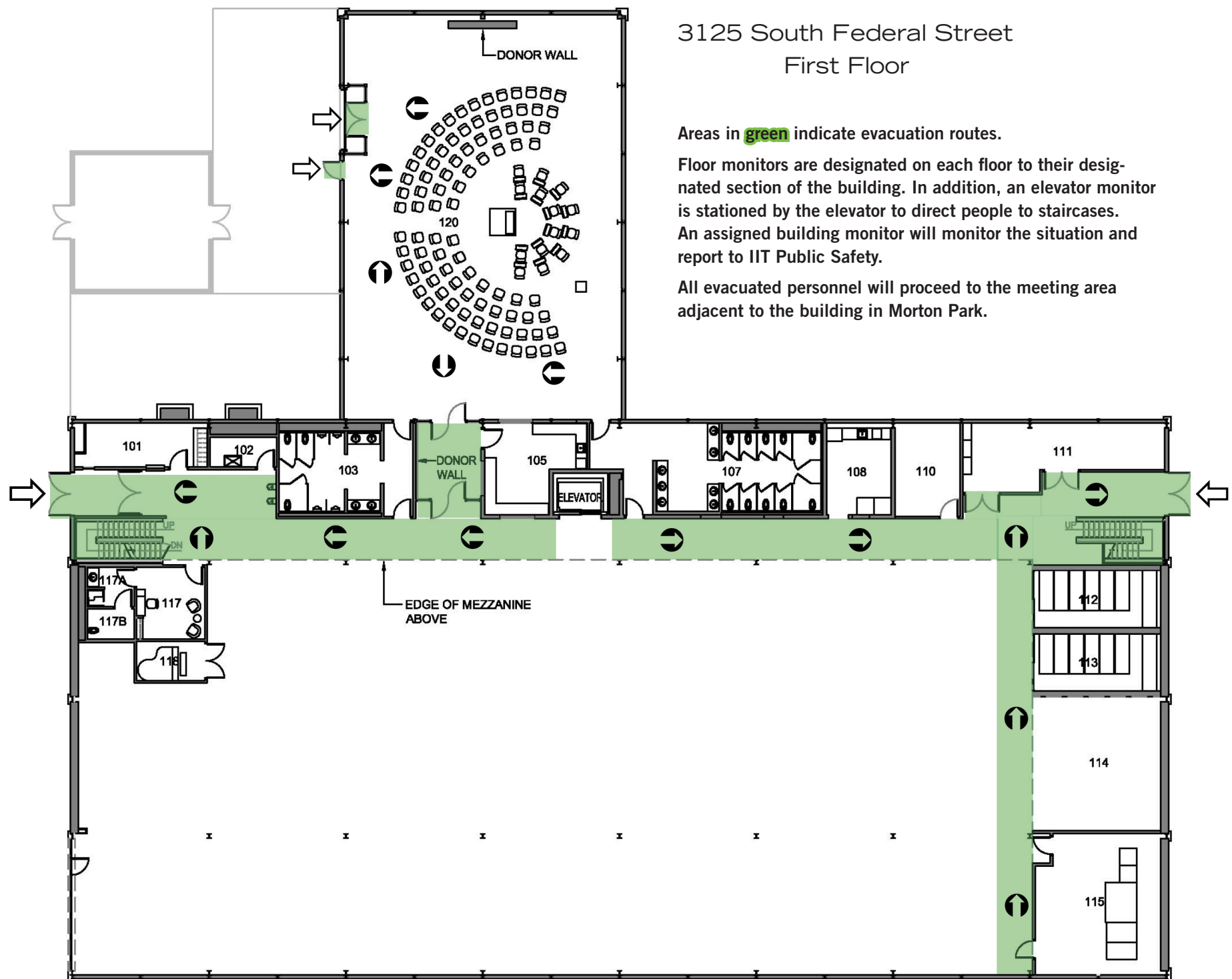
All evacuated areas will proceed to the meeting station located directly across from the building in Morton

3125 South Federal Street First Floor

Areas in **green** indicate evacuation routes.

Floor monitors are designated on each floor to their designated section of the building. In addition, an elevator monitor is stationed by the elevator to direct people to staircases. An assigned building monitor will monitor the situation and report to IIT Public Safety.

All evacuated personnel will proceed to the meeting area adjacent to the building in Morton Park.



3125 South Federal Street Mezzanine

Areas in **green** indicate evacuation routes.

Floor monitors are designated on each floor to their designated section of the building. In addition, an elevator monitor is stationed by the elevator to direct people to staircases. An assigned building monitor will monitor the situation and report to IIT Public Safety.

All evacuated personnel will proceed to the meeting area adjacent to the building in Morton Park.

